

REGISTRATION FORM

Registration for the conference is \$100.00 in advance and \$110.00 at the door. If you need to cancel your registration, a refund, minus \$10.00, will be allowed if requested by November 25th. A reduced registration rate is available for students. Please call for information.

SEND COMPLETED FORM TO:

The Chicago Institute for Psychoanalysis
Attention: Christine Susman
122 South Michigan Avenue, Suite 1314
Chicago, IL 60603
Tel: (312) 922-7474
Fax: (312) 922-5656
Website: www.chicagoanalysis.org

Note: Seating is limited so early registration is strongly encouraged.

Checks should be made payable to the Institute for Psychoanalysis.

Check enclosed for \$ _____

Or please charge my:

Visa MasterCard

Card # _____

Expiration Date _____

Signature _____

Name _____

Address _____

City _____ State _____ Zip _____

Daytime Phone _____

Email Address _____

Profession _____

ACCREDITATION

Physicians: This activity has been planned and implemented in accordance with the Essential Areas and Policies of the Accreditation Council for Continuing medical Education (ACCME) through the joint sponsorship of the American Psychoanalytic Association and the Chicago Institute for Psychoanalysis. The American Psychoanalytic Association is accredited by the ACCME to provide continuing medical education for physicians and takes responsibility for the content, quality and scientific integrity of this CME activity. The American Psychoanalytic Association designates each educational activity for a maximum of 7 hours in category 1 credit toward the Physicians Recognition Award. Each physician should claim only those hours of credit that he or she actually spent in the educational activity.

Psychologists: The Institute for Psychoanalysis of Chicago is approved by the American Psychological Association to offer continuing education for psychologists. The Institute for Psychoanalysis maintains responsibility for this program.

Social Workers: The Institute for Psychoanalysis of Chicago is approved as a continuing education sponsor for social workers by the Department of Professional Regulation of the State of Illinois. The Institute designates each continuing education activity as earning a maximum of 7 hours Continuing Education for Social Workers.

Professional Counselors: The Institute for Psychoanalysis of Chicago is approved as a continuing education sponsor for Professional Counselors and Clinical Professional Counselors by the Department of Professional Regulation of the State of Illinois. The Institute designates each continuing education activity as earning a maximum of 7 hours Continuing Education credit.

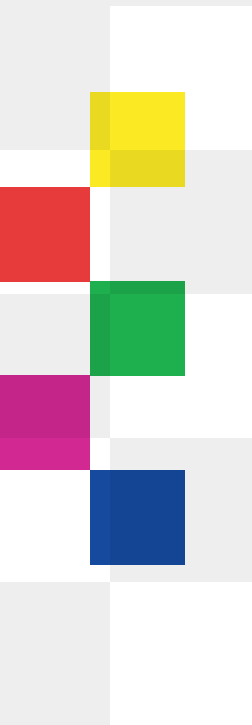
THE CHICAGO INSTITUTE
FOR PSYCHOANALYSIS
122 South Michigan Avenue
Suite 1300
Chicago, IL 60603

THE PSYCHOLOGY OF LEADERSHIP

A Full-Day Conference
Sponsored by the
Chicago Institute for Psychoanalysis

Saturday, December 5, 2009
8:30 a.m. – 4:30 p.m.

At the CNA Building
333 South Wabash (at Jackson)
Chicago



PLANNING COMMITTEE

James W. Anderson, Ph.D.,
Chair

Bertram Cohler, Ph.D.

Joan Dutton

Arnold Goldberg, M.D.

Eva F. Lichtenberg, Ph.D.

Christine Kieffer, Ph.D.

Martin Laub, Ph.D.

Leslie Shaw, M.B.A., Ph.D.

Christine Susman

David Terman, M.D.

Jerome Winer, M.D.

Marvin Zonis, Ph.D.

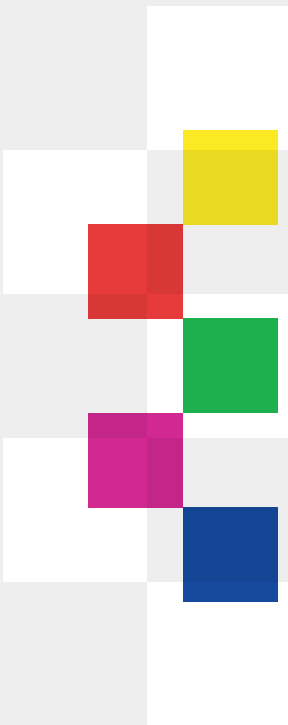
LEADERSHIP MATTERS AT ALL TIMES. But it matters especially today. The country is struggling with the most severe financial breakdown in the past 70 years. Our political leaders are confronted with domestic problems compounded by wars and terrorism abroad. In this conference, outstanding psychologists, psychoanalysts, academic experts, and business people look at fundamental questions related to leadership. What makes for effective leadership? Given that people are by nature individuals with emotions, how can leaders constructively channel their emotional lives into the work that they do? What factors matter for leaders in whatever sphere they serve, whether politics, business, or the military? What can psychoanalysis tell us about the charged, underlying relations between leaders and followers? What special guidelines are there for leaders operating in a period of crisis? This conference seeks, by delving into such questions, to help us become more effective as leaders and to have a greater understanding of the special challenges faced by leaders in a critical period.

EDUCATIONAL OBJECTIVES

The conference is intended for members of the public interested in political and business leadership and for mental health professionals. This section delineates educational objectives for the latter group.

At the end of the program, participants will be able to:

- Help those faced with leadership responsibilities make use of, rather than suppress, their emotional lives in exercising leadership
- Prepare both leaders and followers to recognize the emotional underpinnings of their relationship
- Assess paranoia as it may play a role in a leader’s worldview
- Differentiate the three levels of personality as they apply to a leader
- Apply lessons from the military and corporate worlds to the problems facing leaders
- Explain to leaders that effectiveness stems from not having a me-oriented approach
- Assist leaders in dealing with the challenges of a period of crisis
- Explain the anxieties that are intrinsic to the demands of leadership
- Apply group theory to the interactions of leaders and followers



PROGRAM

Morning Session: Political Leadership

James W. Anderson – Chair

- 8:30 Registration
- 8:55 David M. Terman – Welcoming Remarks
- 9:00 Marvin Zonis
On Leadership
- 9:45 Charles B. Strozier
Heinz Kohut’s Theories of Leadership
- 10:30 Break
- 10:45 Dan P. McAdams
George W. Bush and the Psychology of Redemption
- 11:30 David Terman
An Exploration of Paranoid Leadership and Paranoid Leaders
- 12:15 Lunch
George R. Fay
Military/Corporate Leadership Lessons

Afternoon Session: Business Leadership

Leslie Shaw – Chair

- 1:45 Robert Galatzer-Levy
“It’s Not About Me”: A Paradox of Effective Business and Intellectual Leadership
- 2:30 Mel Bergstein
Leading in a Crisis
- 3:15 Steven LaVoie
The Anxiety of Leadership
- 4:00 Discussant: Solomon Cytrynbaum

CONFERENCE FACULTY

Mel Bergstein, B.S. (The Wharton School), is the co-founder, former CEO, and current Chairman of the Board of Diamond Management & Technology Consultants. He was formerly a partner at Arthur Andersen & Company.

Solomon Cytrynbaum, Ph.D., is a Professor at Northwestern University in the School of Education and Social Policy and in the Department of Psychiatry and Behavioral Sciences of the Medical School. He formerly served as Dean of the School of Education and Social Policy. His publications include two co-edited books: *Transformations in Global and Organizational Systems : Changing Boundaries in the 90s* and *Group Dynamics, Organizational Irrationality and Social Complexity*.

George R. Fay, M.B.A., is an Executive Vice President of Worldwide Property & Casualty Claim and a member of the Operating Committee of CNA. Previously he was Executive Vice President and Chief Services Officer at The Chubb Corporation. A retired Major General, he served as Assistant Deputy Chief of Staff (DCS, G-2) in the United States Army.

Robert Galatzer-Levy, M.D., a child, adolescent and adult psychiatrist and psychoanalyst, is a Lecturer in Psychiatry at the University of Chicago, and a faculty member at the Chicago Institute for Psychoanalysis. His co-authored books include *The Essential Other: A Developmental Psychology of the Self* and *Does Psychoanalysis Work? Problems, Findings and Methods*.

Steven LaVoie, M.P.P.M., founded ArrowStream in 2000 and serves as Chairman and Chief Executive Officer. Previously he was President of the Sterno Division at Blyth Industries.

Dan P. McAdams, Ph.D., is Professor of Psychology and Professor of Human Development and Social Policy, and also Director of the Foley Center for the Study of Lives, at Northwestern University. His books include *The Redemptive Self: Stories Americans Live By* and *The Person*, which is the leading textbook in the field of personality psychology.

Charles B. Strozier, Ph.D., is Professor of History, John Jay College and the Graduate Center, City University of New York; Director, Center on Terrorism; and a faculty member of the Training and Research Institute in Self Psychology, New York City. His books include *Apocalypse: On the Psychology of Fundamentalism in America* and *Heinz Kohut: The Making of a Psychoanalyst*. He is also the co-editor of *The Leader: Psychohistorical Essays*.

David Terman, M.D., is the Director of the Chicago Institute for Psychoanalysis and a training and supervising analyst. With Charles B. Strozier and James W. Jones, he co-edited *The Fundamentalist Mindset* (Oxford University Press, in press).

Marvin Zonis, Ph.D., a research graduate of the Chicago Institute for Psychoanalysis, is Professor Emeritus at the University of Chicago Graduate School of Business and former Professor of Human Development and Middle Eastern Studies at the University of Chicago. His books include *The Kimchi Matters: Global Business and Local Realities in a Crisis-Driven World* and *Majestic Failure: The Fall of the Shah*.